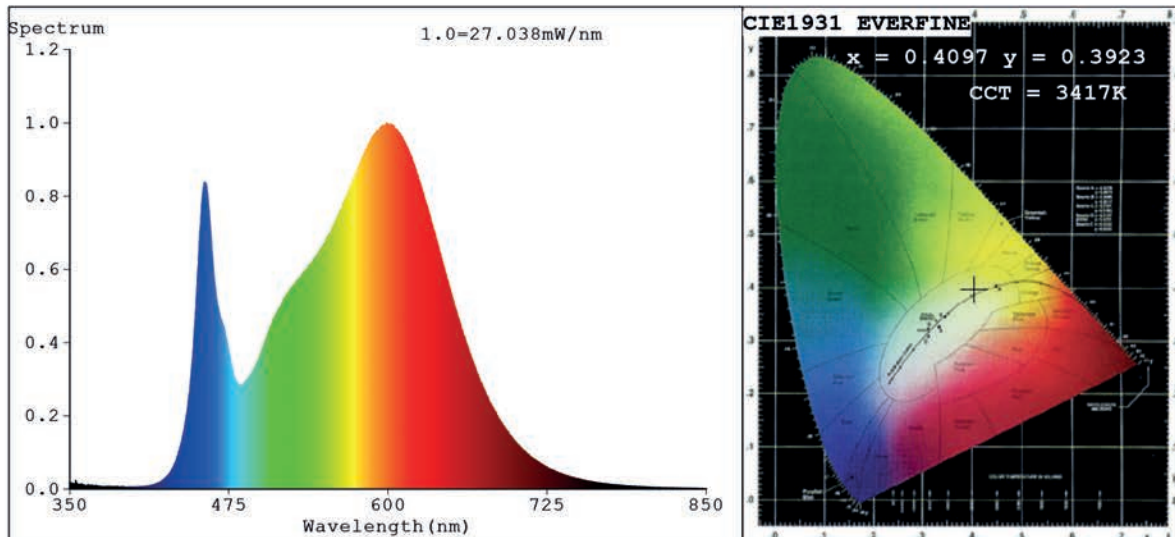


## Spectrum Test Report



### Color Parameters:

Chromaticity Coordinate:  $x=0.4097$   $y=0.3923$   $u'=0.2379$   $v'=0.5126$   
 CCT=3417K (Duv=-0.0003) Dominant WL:Ld =581.3nm Purity=40.7%  
 Ratio:R=20.8% G=75.8% B=3.4%; Peak WL:Lp=598.9nm FWHM=137.2nm  
 Render Index:Ra=83.2 CRI=77.6 TM30:Rf=81 Rg=94  
 R1 =82 R2 =93 R3 =95 R4 =80 R5 =82 R6 =90 R7 =82  
 R8 =61 R9 =9 R10=83 R11=79 R12=66 R13=86 R14=98 R15=75

### Photo Parameters:

Flux = 1406 lm Eff. : 128.57 lm/W Fe = 4.261 W

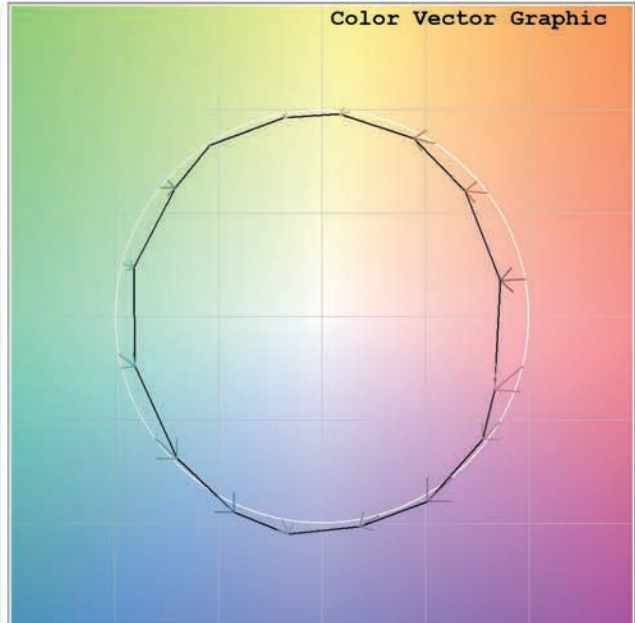
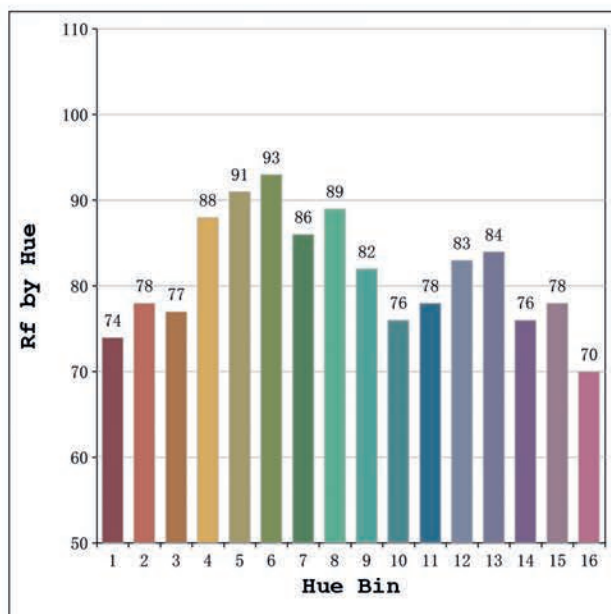
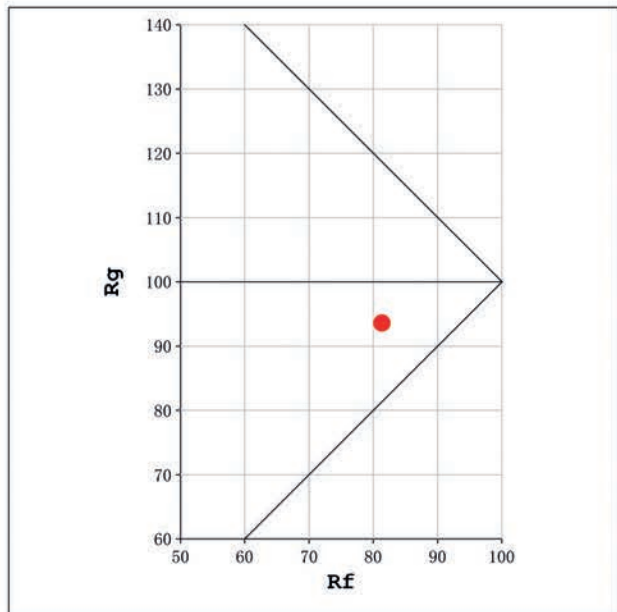
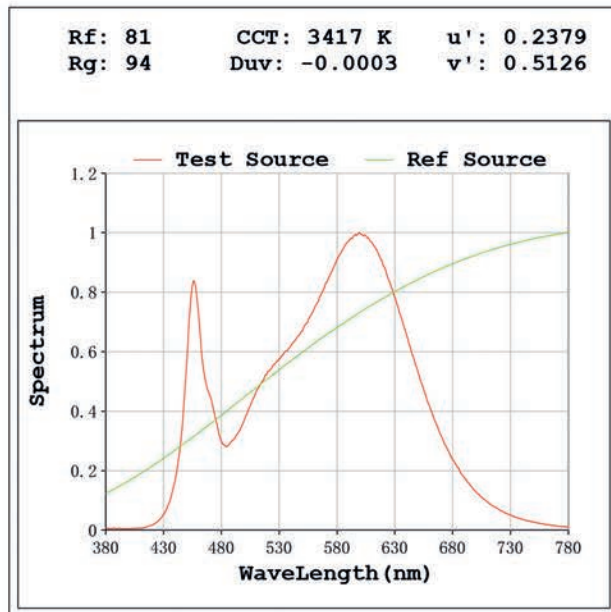
### Electrical parameters:

V = 23.998 V I = 0.4557 A P = 10.94 W PF = 1.000

Status: Integral T = 907 ms Ip = 49528 (76%)

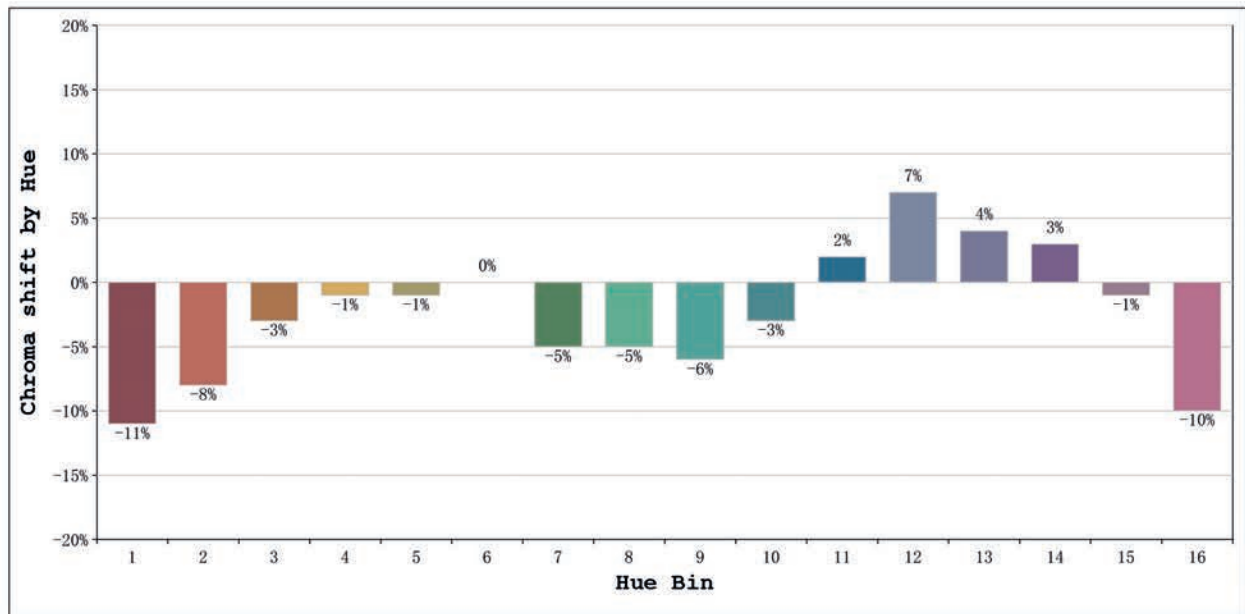
Model:Ecoled Elite 10 3500K  
 Tester:MªAngeles  
 Temperature:25Deg  
 Manufacturer:Luz Negra

Number: 31.209  
 Date:2025-06-02 09:59:59  
 Humidity:40%  
 Remarks:100cm tira flexible



Model:Ecoled Elite 10 3500K  
 Tester:Mª Angeles  
 Temperature:25Deg  
 Manufacturer:Luz Negra

Number: 31.209  
 Date:2025-06-02 09:59:59  
 Humidity:40%  
 Remarks:100cm tira flexible



			Graphic shift(%)	
Hue Bin	Hue Angle	Rf	Chroma	Hue
1	0.0° - 22.5°	74	-11	1
2	22.5° - 45.0°	78	-8	7
3	45.0° - 67.5°	77	-3	10
4	67.5° - 90.0°	88	-1	4
5	90.0° - 112.5°	91	-1	2
6	112.5° - 135.0°	93	0	0
7	135.0° - 157.5°	86	-5	-3
8	157.5° - 180.0°	89	-5	1
9	180.0° - 202.5°	82	-6	7
10	202.5° - 225.0°	76	-3	14
11	225.0° - 247.5°	78	2	13
12	247.5° - 270.0°	83	7	4
13	270.0° - 292.5°	84	4	-9
14	292.5° - 315.0°	76	3	-16
15	315.0° - 337.5°	78	-1	-11
16	337.5° - 360.0°	70	-10	-13

Model:Ecoled Elite 10 3500K  
 Tester:MªAngeles  
 Temperature:25Deg  
 Manufacturer:Luz Negra

Number: 31.209  
 Date:2025-06-02 09:59:59  
 Humidity:40%  
 Remarks:100cm tira flexible